

3/20/09

EuroNexus

For any inquiry, please contact:

Mr. ROBERTO SALA: 00506 8869 2187

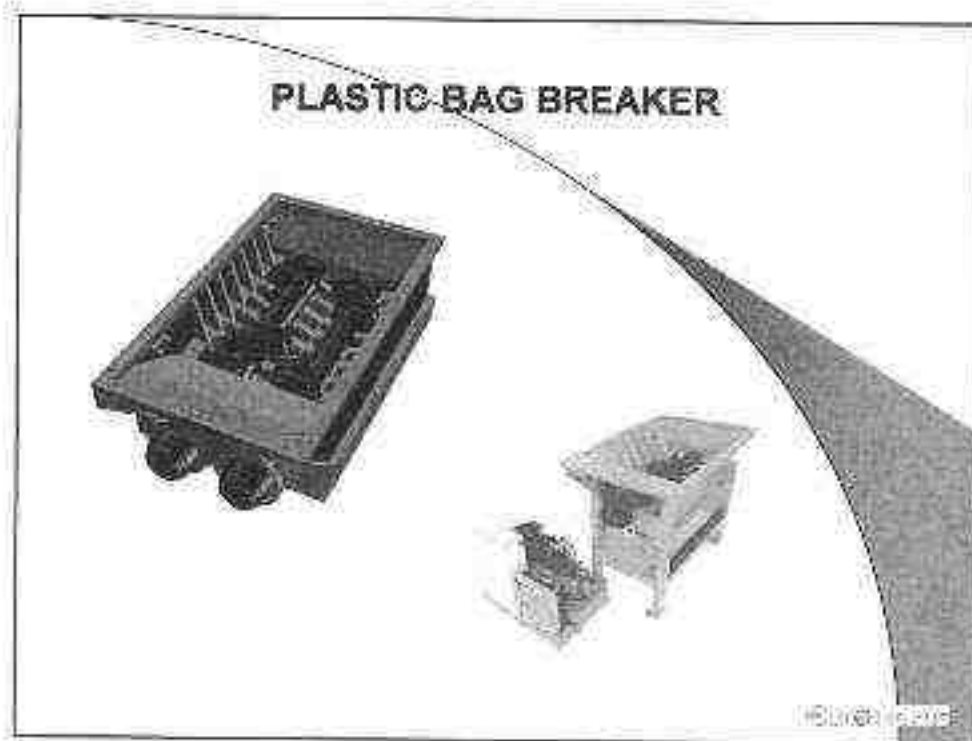
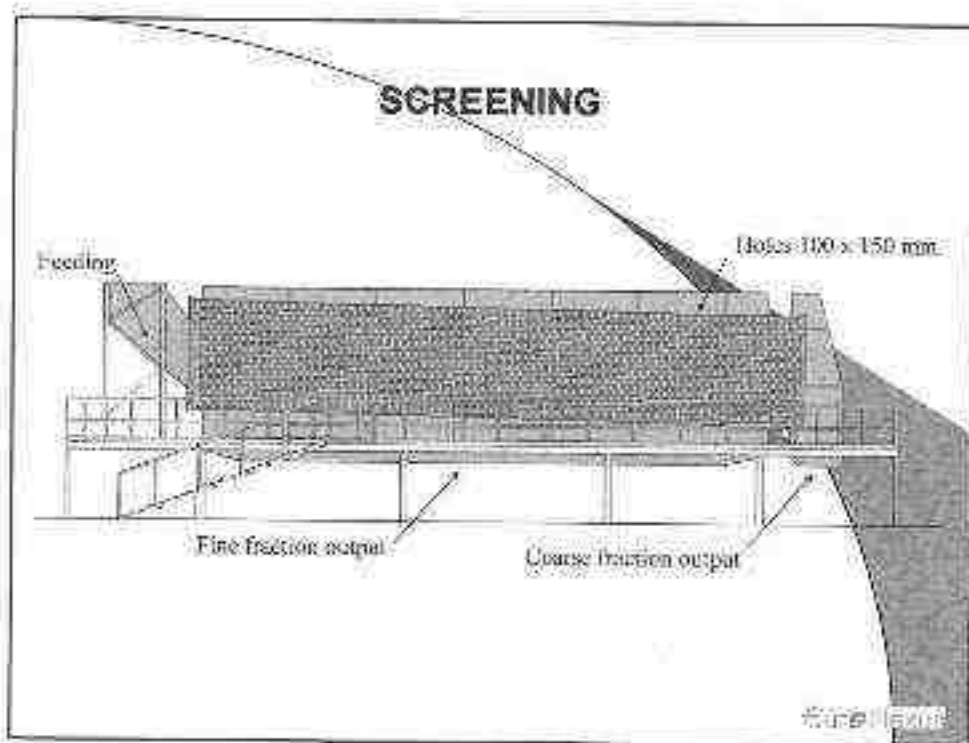
E-mail: sala_roberto@hotmail.com

Skype contact: theglembit

PRESENTS

1. DRY PRESELECTION: PHASES

- PLASTIC BAG BREAKER- SCREENING
- FERROUS METALS SEPARATION
- NON - FERROUS METALS SEPARATION
- MANUAL SORTING



FERROUS METAL SEPARATION

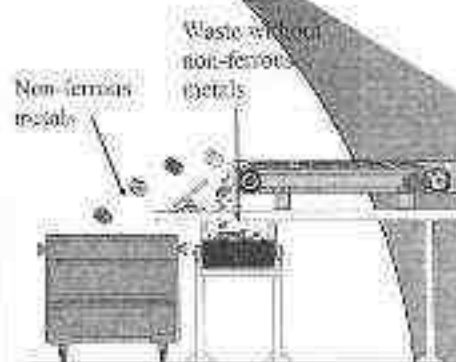
Both the fine and the coarse fraction are subjected to deferrization.
The separated iron can be commercialised as secondary material.



Waste Recycle

NON-FERROUS METALS SEPARATION

Both the fine and the coarse fraction are subjected to inductive separation.
The separated aluminium can be commercialised as secondary material.



Waste Recycle

DRY FRACTION SHREDDING

The shredder aims at making dry materials uniform and reducing their dimensions under 20mm.



Sure! 1000

6. MANUAL SORTING

The coarse fraction, that does not pass through the holes in the screen, is manually sorted to eliminate glass and metals unwanted in the gasification process. Such material includes a very little fraction of organic compounds, so it does not give rise to problems connected to odour emission.



Sure! 1000